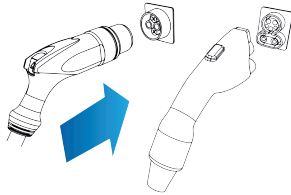


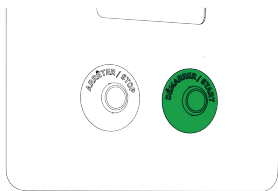
User Guide - SmartDC™



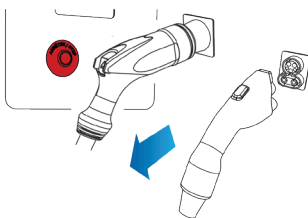
- 1 Plug the connector (CHAdeMO or SAE Combo, depending on car model) into the vehicle.



- 2 Activate the station:
 - Place your card on the reader;
OR
 - Select the station in the mobile app and press "Start a session".



- 3 Wait until the "START" button (located at the front of the station) starts flashing, and then press it.



- 4 Once charging is complete, press the "STOP" button, unplug the connector and replace it in its socket.

IMPORTANT: Once charging is complete, make sure to wind the cable and store the connector in its socket.

Need help? Contact us at **1 877 505-2674**